

# CERTIFICATE OF LOCATION OF GOVERNMENT CORNER

NORTH QUARTER Corner of Section 25, Township 107 N, Range 40 W, 5<sup>th</sup> P.M.

STATE OF MINNESOTA, County of MURRAY

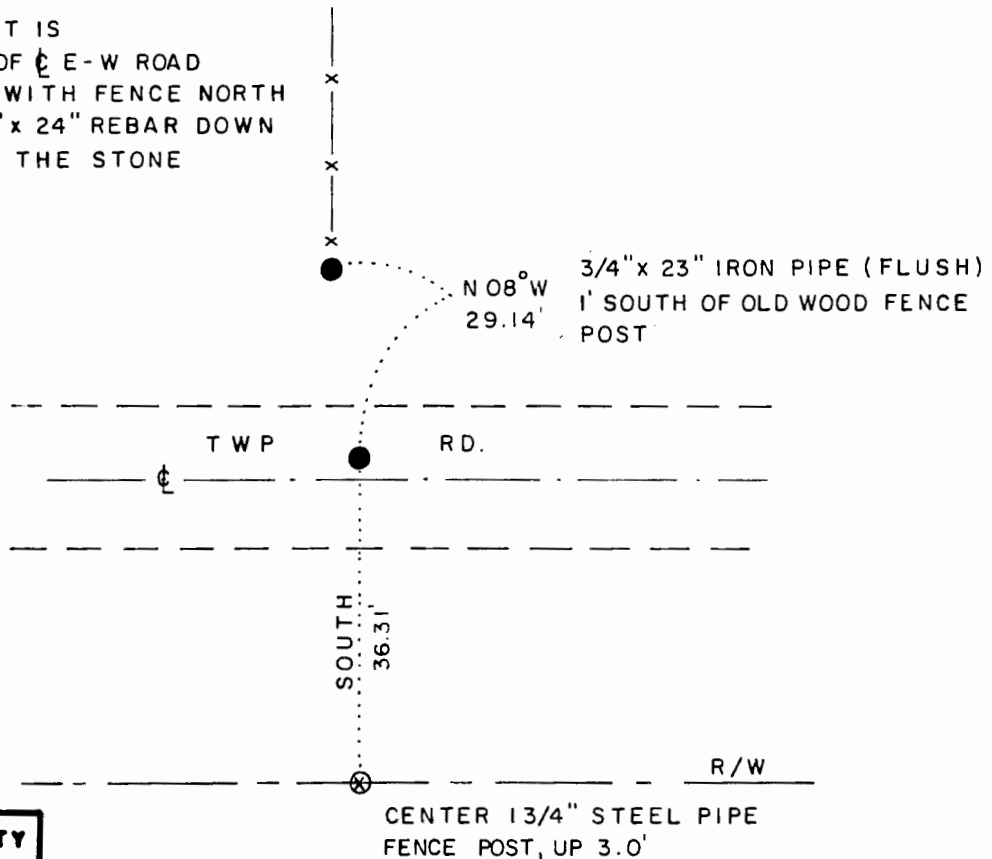
At the corner location shown on the sketch

- On 5-8-91 found a 8" x 11" x 26" POINTED STONE, DOWN 2.5'  
DATE
- left monument as found,  lowered monument,  removed monument (explain)
- On 5-8-91 placed a 3/4" x 24" REBAR WITH ALUMINUM CAP STAMPED  
DATE "DNR SURVEY MARKER", OVER STONE, DOWN 0.5'

### SKETCH OF REFERENCE TIES

NOTE:

MONUMENT IS  
3' NORTH OF  $\epsilon$  E-W ROAD  
IN LINE WITH FENCE NORTH  
SET 3/4" x 24" REBAR DOWN  
5' UNDER THE STONE



**1983 MURRAY COUNTY  
COORDINATE SYSTEM**

N = 174,033.263  
E = 545,735.849

#### BEARINGS OBSERVED WITH COMPASS

Statement of evidence relative to this corner location is on back of page

J.B.M. 6-27-91  
WMA - 00618.00.CO.01

I hereby certify that this document and the data contained herein was prepared by me or under my direct supervision.

Burce W. Shupard 8-12-91  
SIGNATURE DATE

- Registration No. 17003
- Land Surveyor,  Professional Engineer
  - County Surveyor,  County Engineer

OFFICE OF THE COUNTY RECORDER  
County of MURRAY

I hereby certify that this document was filed in the Co. Recorder's office at \_\_\_\_\_ M. on the \_\_\_\_\_ day of AUG 15 1991 A.D., 19 \_\_\_\_\_

County Recorder James V. Johnson  
By \_\_\_\_\_, Deputy

DOCUMENT NO. \_\_\_\_\_

North Quarter Corner of Section 25, Township 107 North, Range 40 West

The DNR Bureau of Engineering contacted the following for survey information:

Secretary of State's Office  
Murray County Recorder's Office and Highway Engineer's Office  
Chicago and North Western Railway Office in St. Paul  
Minnesota Department of Transportation Office in St. Paul

- 1861 U.S. General Land Office notes obtained from the Secretary of State's Office show the corner marked with pits and mound.
- 1898 Surveyor's Record Book A, page 77, obtained from the County Recorder's Office contains a survey by J. W. Woolstencraft. Survey shows a government stake and a 6" by 6" by 18" stone at corner. The corner is shown:  
40.26 chains (2657.16') from the northeast corner of Section 25  
40.26 chains (2657.16') from the northeast corner of Section 26
- 1964 The DNR Bureau of Engineering set a 60d spike for corner at the intersection of the center line of an east-west road and fences north and south. The following ties are shown to corner:  
nail and bottle cap on the west side of end fence post, north, 34.64 feet  
steel fence post, south, 32.20 feet  
2646.21 feet from the northeast corner of Section 25
- 1991 May, The DNR Bureau of Engineering hired a backhoe to dig for evidence of corner. An 8" by 11" by 26" irregular shaped stone was found down 2.5'. Set a 3/4" by 24" rebar down 5' under the stone which was reset down 3'. Searched for but found no evidence of the record ties. The stone was found to be:  
in line with a fence north  
3 feet north of the center line of an east-west road  
2645.58 feet from a bridge bolt found in the area of the northeast corner of Section 25  
2657.62 feet from the northeast corner of Section 26

Analysis of the above information led the DNR Bureau of Engineering to conclude that the found stone marks the location of the corner.